

ViSALL

**Pro IQ2/IQ3/IQ4 progressive
lenses for every use**

Easy to get used to.
Easy to carry.



Pro IQ2/IQ3/IQ4 Progressive lenses

Use of accommodation for improved spatial and dynamic vision.

Pro IQ2/IQ3/IQ4 progressive lenses revolutionize the current concept of personalization in a sophisticated and effective way. The optimization process also takes into account the wearer's accommodative ability to focus at different distances.

Spatial vision technology optimizes the area in which an object can be brought closer to or further away from the eye without noticeably changing the sharpness of the image. This improves the eye's ability to focus on objects both near and far, resulting in exceptional sharpness perception and extended focus ranges.

- Precise and comfortable focus for all working distances in any viewing direction
- Almost complete elimination of peripheral blur
- Excellent visual quality for use on digital devices
- Greater image stability for less "swimming effect"
- Improvement of peripheral visual acuity at distance

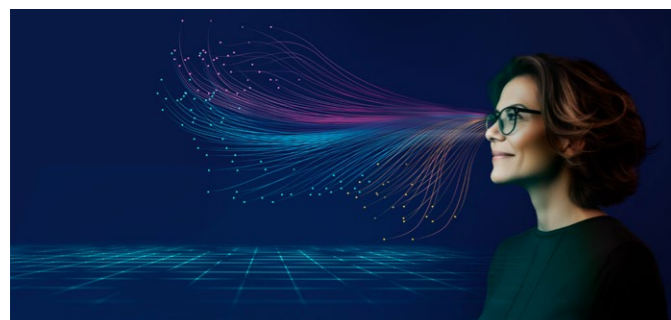


Spatial Vision

This technology ensures that the wearer sees clearly and sharply even in dynamic environments where the distance of objects to the eye is constantly changing. It enables smooth and fast transitions between the visual areas, especially when looking down to focus on nearby objects.

99.5% of all possible Viewing directions are optimized.

Expanded areas of clear focus and brilliant spatial vision.



WITHOUT SPATIAL VISION TECHNOLOGY



WITH SPATIAL VISION TECHNOLOGY



Eye Focus Profile

Eye Focus Profiling for flawless vision.

Perfect visibility from every angle.

The Eye Focus Profile technology maximizes the clear field of vision and significantly reduces the perceived blur in the edge areas of the lens, thereby absolute reduction of defocus is achieved and the visual performance of the lenses is increased.



Ray Tracing

Optimal visibility across the entire glass.

Say goodbye to tilting your head in search of the perfect viewing point - regardless of distance or direction of view.

Thanks to point-by-point optimization across the entire glass surface, Ray Tracing Technology for precise vision at any distance and in every viewing direction for a naturally brilliant viewing experience.



Visual Stability

Achieve perfect stability of vision.

Exude confidence while you move.

The Visual Stability Technology Significantly reduces the floating effect during movement, virtually eliminating image distortion and improving image stability which provides the wearer with a comfortable and clear viewing experience.



Pro IQ2/IQ3/IQ4 progressive lens

- A versatile lens design that optimally balances distance, near and intermediate vision. Developed for active and demanding presbyopes.
- For quality-conscious spectacle wearers
- Greatly reduced swim effects
- Tailored to the needs of each user

Pro IQ2

Comfortable visual ranges thanks to optimisation according to the following parameters: PD 32.3/32.3, HSA 14mm, Vn 7°, FSW 6°, ObjN 38cm.

Pro IQ3

Extended visual ranges through PD[1] optimisation, recommended for PD[1] differences R to L ≥ 1.50 mm and particularly large (≥ 34 mm) or small (≤ 31 mm) PD.

Pro IQ4

Natural vision for personal visual requirements through optimisation according to individual parameters.



Visall GmbH
Hartmattenstraße 19 · 79539 Lörrach · Germany
Tel.: +49 7621 91490-0 · Tel.: +41 61 48125-03
service@visall.de · www.visall.de

